

HEAT PUMPS  
AIR CONDITIONING

## *Inverter Multi-Split MXZ Series*

*You want to feel the warmth, not hear it.<sup>®</sup>*

- Connect from 1 to 8 Indoor Units
- Energy Saving and Quiet Operation
- 7 Systems from 6.4 to 16.0kW (Heating)



Connect multiple indoor units to a single outdoor unit

# Inverter Multi-Split Systems

Guaranteed  
Heating at  
-15°C



## INVERTER MULTI-SPLIT SYSTEM RANGE

### MXZ~VA Series (1 to 6 Indoor Units):

- Many Indoor Unit Combinations to choose from
- Up to 8.0kW Indoor Unit Connection
- **Guaranteed performance down to -15° C**
- 6 Outdoor Units to choose from
- Quiet Operation
- Compact Size Outdoor Unit

pages 3 - 6: For Features and Specifications  
pages 5 - 6: For Selection Procedure



Model	MXZ-2B52	MXZ-3B54	MXZ-4B71	MXZ-4C80	MXZ-5C100	MXZ-6C120
Cool	5.2kW	5.4kW	7.1kW	8.0kW	10.0kW	12.0kW
Heat	6.4kW	7.0kW	8.6kW	9.4kW	12.0kW	14.0kW
Connect	1 - 2 indoor units	1 - 3 indoor units	1 - 4 indoor units	1 - 4 indoor units	1 - 5 indoor units	1 - 6 indoor units
Total Capacity	7.0 kW	10.0 kW	12.5 kW	14.5 kW	17.1 kW	18.0 kW

### MXZ-8A140VA Power Multi (2 to 8 Indoor Units):

- Many Indoor Unit Combinations to choose from
- Silent Mode for more quiet operation
- High COP with advanced energy saving technology
- **Guaranteed performance down to -15° C**
- 14.0 kW (5HP) Inverter Multi-Split System
- 7.1 kW Ducted with Hi Static Pressure
- Single phase power supply
- Connect up to 8 indoor units

pages 7 - 10: For Features and Specifications  
pages 8 - 10: For Selection Procedure



Model	MXZ-8A140
Cool	14.0kW
Heat	16.0kW
Connect	2 - 8 indoor units
Total Capacity	18.5 kW

### Controllers:

- A controller for every situation

page 2: PAR-30MAA & PAR-21MAA 7 Day Timers, MAC-821SC-E (Centralised ON/OFF Controller), AG-150 Controller (With Web Server Functions!)



## SELECTION GUIDE

**Step 1:** Calculate the kilowatt (kW) cooling required for each room individually. Refer to the **Heating Sizing Chart Guide** at: [www.mitsubishi-electric.co.nz/brochure](http://www.mitsubishi-electric.co.nz/brochure)

**Step 2:** Select the Indoor Unit Types you would prefer. ie. Wall Mounted, Wall Mounted Deluxe, Compact Floor, etc.  
*If connecting up to 6 indoor units refer to page 3 or up to 8 indoor units page 7-8.*

**Step 3:** Check the System Selection Calculation of Connectable Indoor Unit Classes to Connectable Indoor / Outdoor Combinations to select the correct Outdoor Unit for your installation. This will ensure the outdoor capacity is capable of connecting to the Indoor Units selected.  
*If connecting up to 6 indoor units refer to page 6 or up to 8 indoor units page 8-10.*

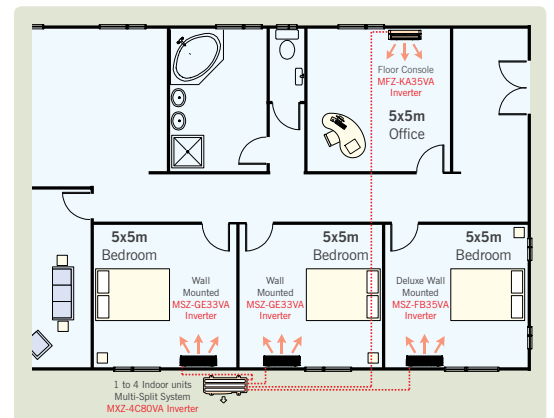
**Note:** In some cases a larger amount of kilowatt (kW) Indoor Units can be selected to connect to a smaller kilowatt (kW) Outdoor Unit.  
**Reasons:** Some areas are not used at the same time as others. i.e. some rooms have reached room temperature so energy can be used in other areas. When only one or two Indoor Units are operated on a large Outdoor, higher output can be achieved.  
**Note:** Please ensure the installation is suitable for connection.

#### Example: 3x Bedrooms and 1x Office

**Step 1:** Units selected as 3.5kW Cooling per Room.

**Step 2:** Wall Mounted Units are selected for the Bedrooms, while a Compact Floor Console is chosen for the Office.

**Step 3:** Check Indoor Selection Table. Indoor Units selected were:  
2x MSZ-GE33VA, 1x MSZ-FB35VA, 1x MFZ-KA35VA  
3.3kW + 3.3kW + 3.5kW + 3.5kW = 13.6kW



The Connectable Indoor / Outdoor Combinations Table shows the MXZ-4C80VA can be used which will give you a nominal cooling of 8.0kW (2.0+2.0+2.0+2.0)kW. The MXZ-5B100VA will give you a nominal cooling of 9.3kW (2.26+2.26+2.39+2.39)kW. If all 13.6kW (3.3+3.3+3.5+3.5)kW are required at the same time the MXZ-8A140VA should be used.

Remember the most efficient way to use a multi-split system is to stagger turning on the indoor units, rather than turning them all on at the same time. This allows each room to achieve its set temperature, then only requires a low level of energy to maintain it. When running 2 of the 3.5kW indoors on the MXZ-4C80VA you will get the full nominal cooling capacity of 7.0kW (3.5+3.5)kW.



# Optional Controllers

## 7 DAY WALL TIMERS

(Optional)

Wake up or come home to optimal temperatures whilst conserving energy!

The PAR-30 with backlit screen and PAR-21 controllers allow your system to be programmed to maintain optimal temperature levels during the times when you are likely to be in the room. In the periods where you are unlikely to be there (such as during work hours or sleep time), the temperature can be set back to a minimum holding temperature instead of turning the system completely off.

Turning a system on and off typically uses the most energy because the system has to heat a room starting from a very low temperature. By maintaining a minimum holding temperature Mitsubishi Electric inverter technology saves you energy as the temperature only needs to be raised by a couple of degrees.

Most air conditioning systems come with a 24 hour timer on the remote controller. This means you can only set the system to automatically turn on and then off once within a 24 hour period. This needs to be manually reactivated each time. The Mitsubishi Electric 7 day timer allows you to program up to 8 separate Start/Stop patterns per day over a 7 day period.

For example:

- Between 10pm till 6am set temperature to 18°C
- Between 6am and 9am set temperature to 21°C
- Between 9am and 5.30pm set temperature to 18°C
- Between 5.30pm and 10pm set temperature to 21°C
- Between 10pm and 6am set temperature to 18°C



PAR-30MAA  
Backlit Screen - 7 Day Timer



PAR-21MAA  
7 Day Timer

### Operation Control Function.

Limiting the set temperature range of the air conditioning operation. The setting of the upper and lower limit temperature is possible. This conserves energy by preventing excessive cooling and heating.

Automatic off timer - For turning off the air conditioning operation. The system can be switched off automatically thereby preventing wasteful operation. The set time can be changed from 30 minutes to 4 hours at 30-minute intervals.

Operation lock - This prevents random modification of settings.

Two lock functions are available:

1. Lock all buttons.
2. Lock all buttons other than ON/OFF button.

### Industry First! Multi-language Display

The display can be set to 8 different languages. English, French, German, Spanish, Italian, Portuguese, Swedish and Russian

## MAC-821SC-E CENTRALISED ON/OFF

### Centralised On/Off Remote Controller

An optional Centralised ON/OFF Controller (MAC-821SC-E\*) can also be incorporated to regulate all connected units in your home (and enabling ON/OFF selection and operation status confirmation from one single controller).



MAC-821SC-E

\* Requires MAC-397IF-E adaptor

### Note:

#### MAC-397IF-E Interface Adaptor.

The PAR-30MAA & PAR-21MAA 7-Day Wall Timer and MAC-821SC-E Centralised On/Off Remote Controller both require the MAC-397IF-E adaptor.



## AG-150 CENTRAL CONTROLLER

### (With Touch Screen / Web Server Functions)

Mitsubishi Electric can also offer the advanced AG-150 central controller. The colour touch screen allows user friendly control of the entire air conditioning system. The system can also be accessed from a computer using a web browser.



AG-150

Features can be added to the Controller by installing Software packages to suit your application. These Software Packages include 365 day Time Scheduling, Auto Alarming via Email when a fault occurs and Power Logging for multiple tenancy applications. The controller also has external inputs and outputs for Fresh Air Fan Start up and Fire Shutdown control. All of these features give you a very universal controller.



Web Screen Views

## Smarter Heating Guide

Whether you're looking for a new Heat Pump or wanting to learn how to use your Heat Pump more efficiently [www.smarterheating.co.nz](http://www.smarterheating.co.nz) has the answer. This online site was specifically developed by Mitsubishi Electric to answer the most common Heat Pump questions so that consumers can make truly informed decisions.



# Inverter Multi-Split System MXZ~VA Series

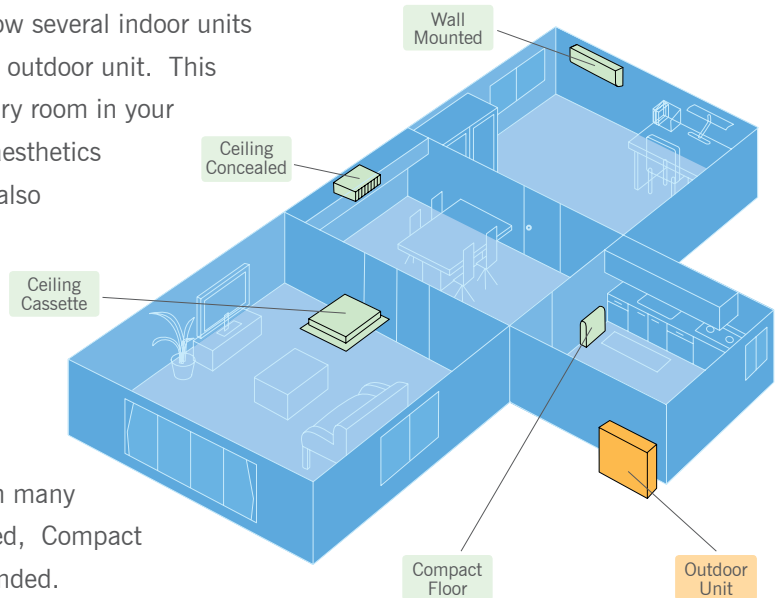
Guaranteed  
Heating at  
-15°C



## For Space Saving...

## Multiple Indoor Units can be connected to a Single Outdoor Unit!

Our Inverter Multi-Split system models are designed to allow several indoor units (regardless of capacity or type) to be connected to a single outdoor unit. This allows you to select the model best suited to each and every room in your home. The Inverter Multi-Split system enhances exterior aesthetics by reducing the number of outdoor units necessary, while also providing you with an easy and economical way of adding indoor units at any time.



## Select from a Wide Range of Stylish Indoor Units

Select the best-suited Indoor Unit for your application from many models. You can choose an Indoor Unit from; Wall Mounted, Compact Floor, Ceiling Concealed, Ceiling Cassette or Ceiling Suspended.

## One Outdoor Unit Saves Space

MXZ~VA series outdoor units can be connected to a minimum of 1 indoor unit and up to 2, 3, 4, 5 or 6 indoor units, optimising use of outdoor space and enhancing exterior aesthetics.

OUTDOOR UNITS	2-port	3-port / 4-port	4-port / 5-port	6-port
	 MXZ-2B52VA	 MXZ-3B54VA MXZ-4B71VA	 MXZ-4C80VA MXZ-5C100VA	 MXZ-6C120VA



INDOOR UNITS	High Wall	Compact Floor	Ceiling Concealed	Ceiling Cassette	Ceiling Suspended
	 MSZ-FB25/35/50VA Deluxe   MSZ-GE22/25/33/42/50VA   MSZ-GE60/71/80VA	 MFZ-KA25/35/50VA	 SEZ-KD35/50/60/71VAQ   PEA-RP71EAQ	 SLZ-KA25/35/50VAQ/L   PLA-RP60/71BA	 PCA-RP50/60/71KAQ

Indoor unit connection Min. / Max.	kW Class	Wall Mounted										Compact Floor			Ceiling Concealed				Ceiling Cassette			Ceiling Suspended						
		MSZ-FB			MSZ-GE							MFZ-KA			SEZ-KD				PEA	SLZ-KA			PLA		PCA			
		2.5	3.5	5.0	2.2	2.5	3.3	4.2	5.0	6.0	7.1	8.0	2.5	3.5	5.0	3.5	5.0	6.0	7.1	7.1	2.5	3.5	5.0	6.0	7.1	5.0	6.0	7.1
1 to 2	MXZ-2B52	•	•		•	•	•	•				•	•		•					•	•							
1 to 3	MXZ-3B54	•	•	•	•	•	•	•				•	•	•	•	•				•	•	•				•		
1 to 4	MXZ4B71	•	•	•	•	•	•	•	•			•	•	•	•	•	•	•		•	•	•	•	•		•	•	•
1 to 4	MXZ-4C80	•	•	•	•	•	•	•	•	•		•	•	•	•	•	•	•	•	•	•	•	•	•		•	•	•
1 to 5	MXZ-5C100	•	•	•	•	•	•	•	•	•		•	•	•	•	•	•	•	•	•	•	•	•	•		•	•	•
1 to 6	MXZ-6C120	•	•	•	•	•	•	•	•	•	•	•	•	•	•	•	•	•	•	•	•	•	•	•		•	•	•

# Connect between 1 to 6 Indoor Units to a single Outdoor Unit

## Energy Saving with High COP

Mitsubishi Electric Inverter Technology provides superior energy efficiency with a heating COP of 5.04 for the MXZ-3B54VA.

**COP 5.04**

## Quiet Operation (Silent Mode)\*

When operating the MXZ outdoor unit in silent mode\* the outdoor sound level on a MXZ-3B54VA is just 44dB(A). In combination with the MSZ-GE25/33VA, indoor noise can also be reduced to a quiet 19dB(A). New Zealand's Quietest Heat Pumps... Ever!



\*Silent mode needs to be set when installed.

## 7 Day Timer (Optional for Indoor Units)

The optional wired wall controller PAR-21MAA or PAR30MAA\* with Weekly Timer function enables 8 separate Start/Stop pattern settings over a single day. Use the optional Centralised On/Off Controller (MAC-821SC-E\*) to provide On/Off selection and see operation status of all Indoor Units.

\*Requires optional interface (MAC-397IF-E), for more information please see page 2.



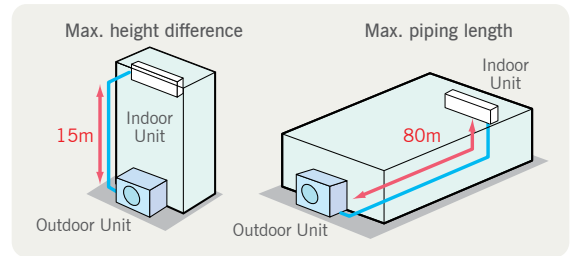
## Fix Operation Mode

It is possible to set a "Fix operation mode" to lock operation to 'Heating' or 'Cooling' mode. This is convenient in places such as rental properties or hotels.

## Longer Piping Length

Piping is extendable up to 80\* metres total in length with 25 metres per unit and 15 metres of this in height (additional refrigerant charge may be required).

\*MXZ-5C100~6C120VA



## Guaranteed Heating Performance Down to Minus 15 Degrees Celsius.

Not all heat pumps perform when they are needed most. Our range is guaranteed to effectively provide heating on those cold nights or mornings when you really need it.



# Inverter Multi-Split System

## MXZ~VA Series

### CONNECTABLE INDOOR UNIT SPECIFICATIONS FOR MXZ~VA SERIES



#### MSZ-GE Series Wall Mounted

Model Name		MSZ-GE22VA	MSZ-GE25VA	MSZ-GE33VA	MSZ-GE42VA	MSZ-GE50VA	MSZ-GE60VA	MSZ-GE71VA	MSZ-GE80VA
kW Class		2.2	2.5	3.3	4.2	5.0	6.0	7.1	8.0
Rated Capacity Cooling (Heating)		kW 2.2 (3.3)	2.5 (3.2)	3.3 (4.0)	4.2 (5.4)	5.0 (5.8)	6.0 (6.8)	7.1 (8.1)	8.0 (9.0)
Pipe Size (Liquid / Gas)		mm 6.35 / 9.52	6.35 / 9.52	6.35 / 9.52	6.35 / 9.52	6.35 / 12.7	6.35 / 15.88	9.52 / 15.88	9.52 / 15.88
Air Flow	Cooling	[SHi] L/s 188.3	188.3	211.7	211.7	251.7	305.0	298.3	298.3
	Heating	[SHi] L/s 191.7	191.7	191.7	218.3	241.7	305.0	298.3	298.3
Sound Level	kW	[Quiet-SHi] dB (A) 19 - 42	19 - 42	19 - 43	26 - 46	28 - 49	29 - 49	30 - 49	30 - 49
Dimensions	W	mm 798	798	798	798	798	1,100	1,100	1,100
	D	mm 232	232	232	232	232	238	238	238
	H	mm 295	295	295	295	295	325	325	325
Weight	kg	10	10	10	10	10	16	16	16

\*SHi = Super High

#### MSZ-FB Series Deluxe Wall Mounted

Model Name		MSZ-FB25VA	MSZ-FB35VA	MSZ-FB50VA	MFZ-KA25VA	MFZ-KA35VA	MFZ-KA50VA
kW Class		2.5	3.5	5.0	2.5	3.5	5.0
Rated Capacity Cooling (Heating)		kW 2.5 (3.2)	3.5 (4.0)	5.0 (6.0)	2.5 (3.4)	3.5 (4.0)	4.8 (6.0)
Pipe Size (Liquid / Gas)		mm 6.35 / 9.52	6.35 / 9.52	6.35 / 12.7	6.35 / 9.52	6.35 / 9.52	6.35 / 12.7
Air Flow	Cooling	[SHi] L/s 187	187	247	145	152	178
	Heating	[SHi] L/s 202	208	247	152	158	197
Sound Level	kW	[Low-SHi] dB (A) 20 - 42 (20-43 Heat)	20 - 43 (21-44 Heat)	29 - 52 (27-50 Heat)	22 - 37	23 - 38 (25-38 Heat)	32 - 43 (32-44 Heat)
Dimensions	W	mm 798	798	798	700	700	700
	D	mm 257	257	257	200	200	200
	H	mm 295	295	295	600	600	600
Weight	kg	12	12	12	14	14	14

\*SHi = Super High

#### MFZ-KA Series Compact Floor

#### SLZ-KA Series Compact Ceiling Cassette

Model Name		SLZ-KA25VAQ\L*	SLZ-KA35VAQ\L*	SLZ-KA50VAQ\L*
kW Class		2.5	3.5	5.0
Rated Capacity Cooling (Heating)		kW 2.5 (3.0)	3.5 (4.0)	4.6 (5.0)
Pipe Size (Liquid / Gas)		mm 6.35 / 9.52	6.35 / 9.52	6.35 / 12.7
Air Flow	[Hi] L/s	167	183	183
Sound Level	[Low-Hi] dB (A)	28 - 37	29 - 38	30 - 39
Dimensions	W	mm 570	570	570
	D	mm 235	235	235
	H	mm 570	570	570
Panel	W x D x H	mm 650 x 650 x 20	650 x 650 x 20	650 x 650 x 20
	Unit (Panel)	kg 16.5 (3)	16.5 (3)	16.5 (3)

\*SLZ-KA~VAL: Includes Wireless Remote Controller.

SLZ-KA~VAQ: Choice of 7 Day Wall Timers (PAR-30 or PAR-21).

#### PLA-RP Series

PLA-RP60BA*	PLA-RP71BA*
6.0	7.1
6.1 (6.9)	7.1 (8.0)
6.35 / 15.88	9.52 / 15.88
300	350
28 - 32	28 - 34
840	840
840	840
258	258
950 x 950 x 35	950 x 950 x 35
23 (6)	23 (6)

\*PLA-RP~BA: Choice of Wireless Remote or 7 Day Wall Timers (PAR-30 / PAR-21)

#### SEZ-KD Series Ceiling Concealed

Model Name		SEZ-KD35VAQ*	SEZ-KD50VAQ*	SEZ-KD60VAQ*	SEZ-KD71VAQ*
kW Class		3.5	5.0	6.0	7.1
Rated Capacity Cooling (Heating)		kW 3.5 (4.0)	5.0 (6.0)	5.5 (7.0)	7.1 (8.1)
Pipe Size (Liquid / Gas)		mm 6.35 / 9.52	6.35 / 12.7	6.35 / 15.88	9.52 / 15.88
Air Flow	[Hi] L/s	183.3	250	300	333
External Static Pressure	Pa	5 - 15 - 35 - 50	5 - 15 - 35 - 50	5 - 15 - 35 - 50	5 - 15 - 35 - 50
Sound Level	[Low-Mid-Hi] dB (A)	23 - 28 - 33	30 - 34 - 37	30 - 34 - 38	30 - 35 - 40
Dimensions	W	mm 900	900	1,100	1,100
	D	mm 700	700	700	700
	H	mm 200	200	200	200
Weight	kg	21	23	27	27

\*SEZ-KD~VAQ : Choice of 7 Day Wall Timers (PAR-30 or PAR-21).

#### PEA-RP Series

PEA-RP71EAQ*
7.1
7.1 (8.4)
9.52 / 15.88
450
125
52 - 55
785
690
428
46

\*PEA-RP~EAQ: Choice of 7 Day Wall Timers (PAR-30 or PAR-21).

#### PCA-RP Series Wall Mounted

Model Name		PCA-RP50KAQ*	PCA-RP60KAQ*	PCA-RP71KAQ*
kW Class		5.0	6.0	7.1
Rated Capacity Cooling (Heating)		kW 5.0 (5.5)	5.7 (6.9)	7.1 (8.0)
Pipe Size (Liquid / Gas)		mm 6.35 / 12.7	6.35 / 15.88	9.52 / 15.88
Air Flow	[Hi] L/s	250	317	333
Sound Level	[Low-Hi] dB (A)	32 - 40	33 - 40	35 - 41
Dimensions	W	mm 960	1280	1280
	D	mm 680	680	680
	H	mm 230	230	230
Weight	kg	25	32	32

\*PCA-RP~KAQ: Choice of 7 Day Wall Timers (PAR-30 or PAR-21).



# sshhhh™

They're very, very quiet.®

## Mitsubishi Electric Quality

### SYSTEM SELECTION CALCULATION

To obtain which outdoor model is needed, first add up the class ratings of all the indoor units you wish to connect. The selection must be within total capacity limit as per the indoor / outdoor combinations table below, which shows the largest indoor class and the maximum capacities that can be connected to any outdoor multi model.

Example. MXZ-4C80VA has a total class maximum of 14.5 kW, so the following combination examples are possible: 2.2+2.2+2.5+7.1 = 13.9 kW, 3.5+5.0+6.0 = 14.5 kW, or 6.0+7.1 = 13.1 kW.

#### Connectable Indoor Unit Classes

Class (kW)	Equivalent models
2.2	MSZ-GE22VA
2.5	MSZ-FB25VA, MSZ-GE25VA, MFZ-KA25VA, SLZ-KA25VA(L)
3.3	MSZ-GE33VA
3.5	MSZ-FB35VA, MFZ-KA35VA, SEZ-KD35VA, SLZ-KA35VA(L)

Class (kW)	Equivalent models
4.2	MSZ-GE42VA
5.0	MSZ-FB50VA, MSZ-GE50VA, MFZ-KA50VA, SEZ-KD50VA, SLZ-KA50VA(L), PCA-RP50KA
6.0	MSZ-GE60VA, SEZ-KD60VA, PLA-RP60BA, PCA-RP60KA
7.1	MSZ-GE71VA, SEZ-KD71VA, PEA-RP71EA, PLA-RP71BA, PCA-RP71KA
8.0	MSZ-GE80VA (MXZ-6C120VA only)

#### Connectable Indoor / Outdoor Combinations

Model	Connect	Connectable Class (kW)			
		Largest Indoor	Total (max.)	Nominal Rating	
MXZ-2B52VA	1 to 2 indoors	4.2	7.0	5.2	Choose 1 to 2 indoor units from class 2.2, 2.5, 3.3, 3.5, 4.2. With a maximum class total of 7.0 kW.
MXZ-3B54VA	1 to 3 indoors	5.0	10.0	5.4	Choose 1 to 3 indoor units from class 2.2, 2.5, 3.3, 3.5, 4.2, 5.0. With a maximum class total of 10.0 kW.
MXZ-4B71VA	1 to 4 indoors	6.0	12.5	7.1	Choose 1 to 4 indoor units from class 2.2, 2.5, 3.3, 3.5, 4.2, 5.0, 6.0. With a maximum class total of 12.5 kW.
MXZ-4C80VA	1 to 4 indoors	7.1	14.5	8.0	Choose 1 to 4 indoor units from class 2.2, 2.5, 3.3, 3.5, 4.2, 5.0, 6.0, 7.1*. With a maximum class total of 14.5 kW.
MXZ-5C100VA	1 to 5 indoors	7.1	17.1	10.0	Choose 1 to 5 indoor units from class 2.2, 2.5, 3.3, 3.5, 4.2, 5.0, 6.0, 7.1. With a maximum class total of 17.1 kW.
MXZ-6C120VA	1 to 6 indoors	8.0	18.0	12.0	Choose 1 to 6 indoor units from class 2.2, 2.5, 3.3, 3.5, 4.2, 5.0, 6.0, 7.1, 8.0. With a maximum class total of 18.0 kW.

\*Note: The MXZ-4C80VA can use 1x class 7.1 kW indoor unit only!

To view the complete Multi-Split Capacity Output Table with electrical data, please download this from [www.mitsubishi-electric.co.nz/brochure](http://www.mitsubishi-electric.co.nz/brochure)

If more than 6 indoor units are required please view pages 7-10 for our Power Multi MXZ-8A140VA which can take 8 indoor units with a maximum capacity of 18.5kW.

### OUTDOOR UNIT SPECIFICATIONS

#### MXZ VA Series Inverter Multi-Split Outdoor Units (R410A)

TYPE			Inverter Multi-Split System Outdoor Units						
MODEL NAME			MXZ-2B52VA	MXZ-3B54VA	MXZ-4B71VA	MXZ-4C80VA	MXZ-5C100VA	MXZ-6C120VA	
INDOOR COMBINATION			1 to 2 Indoor Units	1 to 3 Indoor Units	1 to 4 Indoor Units	1 to 4 Indoor Units	1 to 5 Indoor Units	1 to 6 Indoor Units	
COOL	Capacity	[kW]	5.2	5.4	7.1	8.0	10.0	12.0	
		Min-Max [kW]	1.1 - 6.0	2.9 - 6.8	3.7 - 8.8	3.7 - 9.2	3.9 - 11.0	3.5 - 13.5	
	Input	[kW]	1.30	1.19	1.68	1.96	2.80	3.61	
	EER (out)		4.0	4.23	4.54	4.09	3.57	3.32	
	Sound Level (Silent/High)	[dB(A)]	49	47	48	46	51	55	
	Rated Current (Out)	[A]	5.83	5.23	7.38	8.59	12.3	15.85	
	Max. Current	[A]	20	20	20	17.4	20.0	32.0	
	Air Volume (High)	[L/s]	548	701.3	701	701.67	943	923.3	
HEAT	Capacity	[kW]	6.4	7.0	8.6	9.4	12.0	14.0	
		Min-Max [kW]	1.0 - 7.2	2.6 - 9.0	3.4 - 10.7	3.4 - 11.6	4.1 - 14.0	3.5 - 16.5	
	Input	[kW]	1.61	1.46	1.71	1.93	2.84	3.47	
	COP (out)		3.98	5.04	4.78	4.87	4.23	4.03	
	Sound Level (Silent/High)	[dB(A)]	50	51	52	48	54	57	
	Rated Current (Out)	[A]	7.22	6.43	7.49	8.48	12.45	15.24	
	Max. Current	[A]	20	20	20	17.4	20.0	32.0	
	Air Volume In (High)	[L/s]	555	716.7	717	730	988.3	1165	
Max. Total Capacity of all indoor units			[kW]	7.0	10.0	12.5	14.5	17.1	18.0
Power Supply			[V,Phase,Hz] 230, Single, 50, Outdoor Power Supply						
OUTDOOR	Dimensions (WxDxH)	[mm]	800 x 285 x 550	840 x 330 x 710	840 x 330 x 710	900 x 320 x 900	900 x 320 x 900	900 x 320 x 1070	
	Weight	[kg]	38	57	58	67	68	88	
	Liquid (Diameter)	[mm]	6.35 x2	6.35 x3	6.35 x4	6.35 x4	6.35 x5	6.35 x6	
EXT. PIPE	Gas (Diameter)	[mm]	9.52 x2	9.52 x3	9.52 x3 + 12.7 x1	9.52 x3 + 12.7 x1	9.52 x4 + 12.7 x1	9.52 x5 + 12.7 x1	
	Max. Length† (Total/Each)	[m]	30 / 20	50 / 25	60 / 25	70 / 25	80 / 25	80 / 25	
	Max. Height	[m]	15 (10*)	15 (10*)	15 (10*)	15 (10*)	15 (10*)	15 (10*)	
OPERATION RANGE	Cooling	[°C]	-10 / +43	-10 / +43	-10 / +43	-10 / +43	-10 / +43	-10 / +43	
	Heating	[°C]	-15 / +24	-15 / +24	-15 / +24	-15 / +24	-15 / +24	-15 / +24	

Note: Running Current and Power Input figures are for outdoor unit only.

Rating Conditions: Cooling — Indoor: 27°C DB, 19°C WB Outdoor: 35°C (AS / NZS 3823) Heating — Indoor: 20°C DB Outdoor: 7°C DB, 6°C WB

† Maximum length is inclusive of height differential.

i.e. (30 max. length / 15 max. height) means that 2x pipes can be 10m high and 5m across each for a total length of 30m.

\* If the outdoor unit is installed higher than the indoor unit, max. height is reduced to 10m.

# Inverter Multi-Split System MXZ-8A140VA

Guaranteed  
Heating at  
-15°C



## The new Power Multi provides a quiet, highly efficient and flexible air conditioning system for all your heating and cooling needs

The MXZ-8A140VA Power Multi is a new addition to Mitsubishi Electric's popular Inverter Multi series Air Conditioning systems. The Power Multi has been specifically designed for homes or small offices, and with a long list of features, gives you the best comfort level for any room.



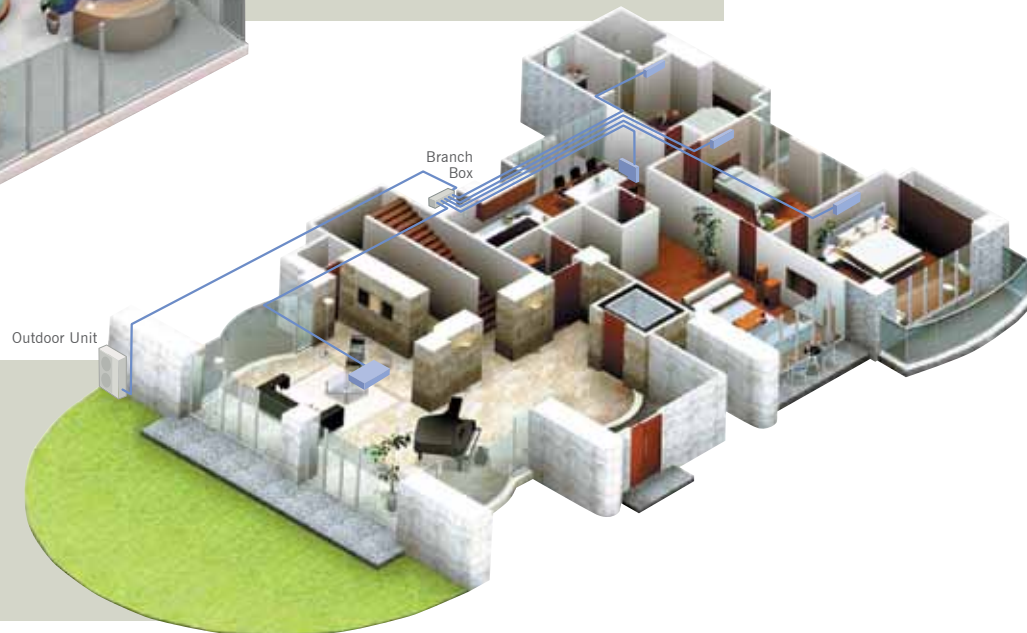
### For Offices

#### Suggestion for indoor unit selection

The SLZ-KA Cassette units are 570 x 570 to install into half ceiling tiles.

For larger areas the PLA-RP Cassette is installed.

Cassette units have 4 outlets that can be adjusted to give better room comfort



### For Homes

#### Suggestion for indoor unit selection

For a large living room, the SEZ-KD Ceiling Concealed or the MFZ-KA Compact Floor Standing type easily match your interior.

For a bedroom, the Wall Mounted type creates a quiet atmosphere for sleeping.

## High Efficiency

The latest technology obtained through the development of our well-reputed Power Inverter series offers the higher EER of 3.52 in Cooling\* and COP of 3.91 in Heating\*.

\*When connected with 3x MSZ-GE60VA indoor units.

## Flexible Choice of Indoor Unit

You can choose an indoor unit optimum for the application, interior and size of your room from the versatile product line from many models.

## 7-Day Timer (Optional for Indoor Units)

The optional wired wall controller PAR-21MAA or PAR30MAA\* with Weekly Timer function enables 8 separate Start/Stop pattern settings over a single day.

\*Requires optional interface (MAC-3971F-E), for more information please see page 2.

## Silent Operation

The Power Multi runs so smooth and quiet, you get comfort with very little noise. Under low operating load, the "Low-Noise" mode can be selected thus providing more silent operation. Connecting with our latest wall mounted indoor units creates a silent and comfortable living environment.

## Guaranteed Heating Performance Down to Minus 15 Degrees Celsius

## Easy Installation

We have worked hard to make the Power Multi as easy to install and maintain as possible. The branch box simplifies the piping work, providing only one pair of pipes to be installed from the outdoor unit inside to the branch box.

# Easy Installation with 2 to 8 Connectable Indoor Units

## New to the range of Multi Systems

Large Ducted and Ceiling Cassette Indoor units with a cooling capacity of up to 7.1kW.

The PEA-RP71EAQ Ducted Indoor has the ability to cover a larger area with a Hi Static Pressure Fan for the installation of more ductwork to provide a more comfortable working environment. Choice of PAR-21 or PAR30 7 day wall timer.

The PLA-RP60/71BA Cassette Indoor can be installed in a larger area with a ceiling height of up to 4.2 Metres. Choice of PAR-21, PAR30 7 day wall timer or infra red remote.



PEA-RP71EAQ

- Hot Start
- Ducted High Static Pressure (125Pa)



PAR-30MAA

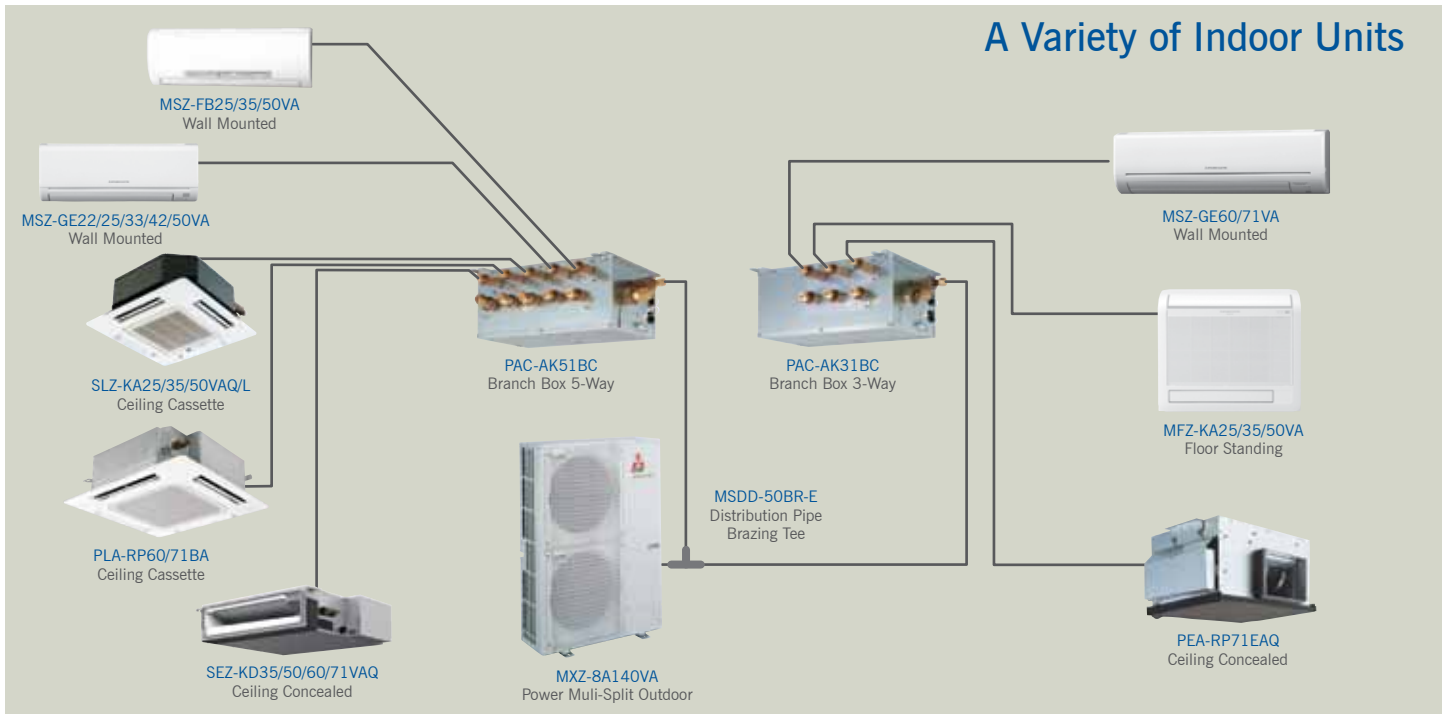


PAR-21MAA



PLA-RP60/71BA

- Hot Start
- High Ceiling Mode
- Fresh Air Intake
- Additional Air Outlet Duct
- Optional: Elevating Grille
- Optional: 360° i-see Temperature Sensor



## MXZ-8A140VA Inverter Power Multi-Split

- 14.0kW (5HP) Inverter Multi-Split System
- High COP with advanced energy saving technology
- Silent Mode for quieter operation
- R410A refrigerant
- Single phase power supply



## Procedures for Selection

Basic Conditions:

- Number of indoor units: **2 to 8 units**
- Total indoor unit capacity: **4.4 to 18.5 kW**
- Number of branch box: **1 to 2 units**
- Number of branch boxes used: **1 branch box** (Not required) or **2 branch boxes** (1 distribution pipe required)

Type of indoor unit	Series name	Capacity Class (kW)							
		2.2	2.5	3.3	3.5	4.2	5.0	6.0	7.1
Wall Mounted	MSZ-FB: Deluxe		•		•		•		•
	MSZ-GE: Standard	•	•	•		•	•	•	•
Ceiling Concealed	SEZ-KD: Compact				•		•	•	•
	PEA-RP: High Static (125Pa)								•
Ceiling Cassette	SLZ-KA: Compact		•		•		•		
	PLA-RP: Power Cassette							•	•
Floor Standing	MFZ-KA: Compact		•		•		•		

System Capacity Calculation:

Method for obtaining system capacity

To obtain the system capacity, first add up the ratings of all the indoor units connected and then find the standard capacity with the help of the figures below. The unit's quantities are limited in 2 to 8 units. Make sure that the total rated capacity selected will stay in a range of 4.4 ~ 18.5kW.

SLZ-KA35VA	=	3.5 kW	} Total rated capacity 18.5 ≤ <b>18.5kW</b>
SLZ-KA50VA	=	5.0 kW	
MSZ-GE25VA x 4	=	2.5 x 4 = 10.0 kW	

# Inverter Multi-Split System

## MXZ-8A140VA

### Connectable Indoor Unit Specifications for MXZ VA Series



#### MSZ-GE Series Wall Mounted

Model Name				MSZ-GE22VA	MSZ-GE25VA	MSZ-GE33VA	MSZ-GE42VA	MSZ-GE50VA	MSZ-GE60VA	MSZ-GE71VA
kW Class				2.2	2.5	3.3	4.2	5.0	6.0	7.1
Rated Capacity Cooling (Heating)				2.2 (3.3)	2.5 (3.2)	3.3 (4.0)	4.2 (5.4)	5.0 (5.8)	6.0 (6.8)	7.1 (8.1)
Pipe Size (Liquid / Gas)				6.35 / 9.52	6.35 / 9.52	6.35 / 9.52	6.35 / 9.52	6.35 / 12.7	6.35 / 15.88	9.52 / 15.88
Air Flow	Cooling	[SHi]	L/s	188.3	188.3	211.7	211.7	251.7	305.0	298.3
	Heating			191.7	191.7	191.7	218.3	241.7	305.0	298.3
Sound Level	kW	[Quiet-SHi]	dB (A)	19 - 42	19 - 42	19 - 43	26 - 46	28 - 49	29 - 49	30 - 49
Dimensions	W		mm	798	798	798	798	798	1,100	1,100
	D		mm	232	232	232	232	232	238	238
	H		mm	295	295	295	295	295	325	325
Weight				kg	10	10	10	10	16	16

\*SHi = Super High

#### MSZ-FB Series Deluxe Wall Mounted

#### MFZ-KA Series Compact Floor

Model Name				MSZ-FB25VA	MSZ-FB35VA	MSZ-FB50VA	MFZ-KA25VA	MFZ-KA35VA	MFZ-KA50VA
kW Class				2.5	3.5	5.0	2.5	3.5	5.0
Rated Capacity Cooling (Heating)				2.5 (3.2)	3.5 (4.0)	5.0 (6.0)	2.5 (3.4)	3.5 (4.0)	4.8 (6.0)
Pipe Size (Liquid / Gas)				6.35 / 9.52	6.35 / 9.52	6.35 / 12.7	6.35 / 9.52	6.35 / 9.52	6.35 / 12.7
Air Flow	Cooling	[SHi]	L/s	187	187	247	145	152	178
	Heating			202	208	247	152	158	197
Sound Level	kW	[Low-SHi]	dB (A)	20 - 42 (20-43 Heat)	20 - 43 (21-44 Heat)	29 - 52 (27-50 Heat)	22 - 37	23 - 38 (25-38 Heat)	32 - 43 (32-44 Heat)
Dimensions	W		mm	798	798	798	700	700	700
	D		mm	257	257	257	200	200	200
	H		mm	295	295	295	600	600	600
Weight				kg	12	12	14	14	14

\*SHi = Super High

#### SLZ-KA Series Compact Ceiling Cassette

#### PLA-RP Series

Model Name				SLZ-KA25VAQ\*	SLZ-KA35VAQ\*	SLZ-KA50VAQ\*
kW Class				2.5	3.5	5.0
Rated Capacity Cooling (Heating)				2.5 (3.0)	3.5 (4.0)	4.6 (5.0)
Pipe Size (Liquid / Gas)				6.35 / 9.52	6.35 / 9.52	6.35 / 12.7
Air Flow		[Hi]	L/s	167	183	183
Sound Level		[Low-Hi]	dB (A)	28 - 37	29 - 38	30 - 39
Dimensions	W		mm	570	570	570
	D		mm	235	235	235
	H		mm	570	570	570
Panel	W x D x H		mm	650 x 650 x 20	650 x 650 x 20	650 x 650 x 20
Weight				Unit (Panel)	kg	16.5 (3)

\*SLZ-KA~VAL: Includes Wireless Remote Controller.

SLZ-KA~VAQ: Choice of 7 Day Wall Timers (PAR-30 or PAR-21).

PLA-RP60BA*	PLA-RP71BA*
6.0	7.1
6.1 (6.9)	7.1 (8.0)
6.35 / 15.88	9.52 / 15.88
300	350
28 - 32	28 - 34
840	840
840	840
258	258
950 x 950 x 35	950 x 950 x 35
23 (6)	23 (6)

\*PLA-RP~BA: Choice of Wireless Remote or 7 Day Wall Timers (PAR-30 / PAR-21)

#### SEZ-KD Series Ceiling Concealed

#### PEA-RP Series

Model Name				SEZ-KD35VAQ*	SEZ-KD50VAQ*	SEZ-KD60VAQ*	SEZ-KD71VAQ*
kW Class				3.5	5.0	6.0	7.1
Rated Capacity Cooling (Heating)				3.5 (4.0)	5.0 (6.0)	5.5 (7.0)	7.1 (8.1)
Pipe Size (Liquid / Gas)				6.35 / 9.52	6.35 / 12.7	6.35 / 15.88	9.52 / 15.88
Air Flow		[Hi]	L/s	183.3	250	300	333
External Static Pressure			Pa	5 - 15 - 35 - 50	5 - 15 - 35 - 50	5 - 15 - 35 - 50	5 - 15 - 35 - 50
Sound Level		[Low-Mid-Hi]	dB (A)	23 - 28 - 33	30 - 34 - 37	30 - 34 - 38	30 - 35 - 40
Dimensions	W		mm	900	900	1,100	1,100
	D		mm	700	700	700	700
	H		mm	200	200	200	200
Weight				kg	21	23	27

\*SEZ-KD~VAQ : Choice of 7 Day Wall Timers (PAR-30 or PAR-21).

PEA-RP71EAQ*
7.1
7.1 (8.4)
9.52 / 15.88
450
125
52 - 55
785
690
428
46

\*PEA-RP~EAQ: Choice of 7 Day Wall Timers (PAR-30 or PAR-21).

#### PAC-AK\*\*BC Branch Boxes

Model Name				PAC-AK51BC	PAC-AK31BC
Connectable Number of Indoor Units				Max. 5	Max. 3
Power Supply [Source, V, Phase, Hz]				from Outdoor Unit, 230, Single, 50	
Power Input				kW	0.003
Running Current				A	0.05
Drain Hose* Size				O.D. 20 (VP-16)	
Dimensions [WxDxH]				450x280x198	
Weight				kg	9.3
Piping [diameter]	Branch [Indoor side]	Liquid	mm	6.35x5	6.35x3
		Gas	mm	9.52x4, 12.7x1	9.52x3
	Main [Outdoor side]	Liquid	mm	9.52	9.52
		Gas	mm	15.88	15.88
Connection Method				Flared	
Wiring				to Indoor Unit	
to Outdoor Unit				3-wire + Earth wire	

\*To be locally purchased



# sshhhh...

They're very, very quiet.®

## Mitsubishi Electric Quality

### Connectable Indoor Units

Class (kW)	Equivalent models
2.2	MSZ-GE22VA
2.5	MSZ-FB25VA, MSZ-GE25VA, MFZ-KA25VA, SLZ-KA25VA(L)
3.3	MSZ-GE33VA
3.5	MSZ-FB35VA, MFZ-KA35VA, SEZ-KD35VA, SLZ-KA35VA(L)
4.2	MSZ-GE42VA
5.0	MSZ-FB50VA, MSZ-GE50VA, MFZ-KA50VA, SEZ-KD50VA, SLZ-KA50VA(L)
6.0	MSZ-GE60VA, SEZ-KD60VA, PLA-RP60BA,
7.1	MSZ-GE71VA, SEZ-KD71VA, PEA-RP71EA, PLA-RP71BA

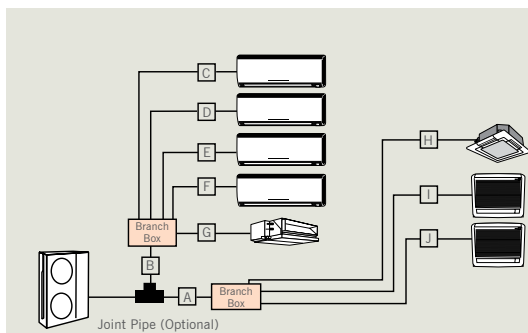
### System Capacity Calculation:

To obtain the system capacity, first add up the ratings of all the indoor units connected and then find the standard capacity with the help of the figures below. The unit's quantities are limited in 2 to 8 units.

Make sure that the total rated capacity selected will stay in a range of 4.4 to 18.5kW.

SLZ-KA35VA	= 3.5 kW	} Total rated capacity 18.5 ≤ <b>18.5kW</b>
SLZ-KA50VA	= 5.0 kW	
MSZ-GE25VA x 4	= 2.5 x 4 = 10.0 kW	

### Piping Length and Height Differential Table



		MAX
Total piping	(A+B+C+D+E+F+G+H+I+J)	115m
Outdoor Branch Box	(A+B)	55m
Branch Box indoor	(C+D+E+F+G+H+I+J)	60m
	(Each C, D, E, F, G, H, I, J)	15m
Outdoor indoor	(Farthest)	70m
Height difference	Outdoor - Indoor	30m*
	Outdoor - Branch Box	30m
	Branch Box - Indoor	15m
	Indoor - Indoor	12m

\* 20m when installing the outdoor unit lower than indoor unit.

### System Capacity Calculation:

Additional refrigerant charge is not necessary for this unit if the total pipe length (A + B + C + D + E + F + G + H + I + J) does not exceed 40m. If the total pipe length exceeds 40m, charge the unit with additional R410A refrigerant according to the pipe lengths, referring to the chart below.

Total piping length (A + B + C + D + E + F + G + H + I + J)	40m or less	40 - 50m	51 - 70m	71 - 90m	91 - 115m
Additional refrigerant charging amount	0kg (no need)	0.9kg	1.7kg	2.5kg	3.5kg

## OUTDOOR UNIT SPECIFICATIONS

### MXZ VA Series Inverter Multi-Split Outdoor Units (R410A)

TYPE		Inverter Multi - Split	
MODEL NAME		MXZ-8A140VA	
INDOOR COMBINATION		2 to 8 Indoor Units	
COOL	Capacity	[kW]	14.0
	Input *1	[kW]	3.79
	EER (In + Out) *2		3.52
	Sound Level	[dB(A)]	50
	Current Running (Rated)	[A]	16.55
	Air Volume (High)	[L/s]	1667
HEAT	Capacity	[kW]	16
	Input *1	[kW]	3.90
	COP (In + Out) *2		3.91
	Sound Level	[dB(A)]	52
	Current Running (Rated)	[A]	17.05
	Air Volume In (High)	[L/s]	1667
Current Starting	[A]	14	
Current Running (Max.)	[A]	29.5	
Total Capacity of all indoor units	[kW]	4.4 to 18.5	
OUTDOOR	Dimensions (WxDxH)	[mm]	950 x 330 x 1350
	Weight	[kg]	128
EXT. PIPE	Liquid (Diameter)	[mm]	9.52
	Gas (Diameter)	[mm]	15.88
	Max. Length/Height (Total) *3	[m]	115
	Max. Height *3	[m]	30
	Precharged	[m]	40
Power Supply	[V,Phase,HZ]	230, Single, 50	
Connection Method (Indoor / Outdoor side)		Flared / Flared	
OPERATION RANGE	Cooling	[°C]	-5 / +46
	Heating	[°C]	-15 / +24

### External Wiring: (Power supply intake, outdoor unit only)

The single-phase power supply is wired to the outdoor unit only.

The branch box and indoor units are powered by the outdoor unit through interconnecting wiring.

**Breaker:** Interrupting current - 40A / Performance characteristics - 40A, 30mA for 0.1 sec. or less.

#### IMPORTANT

Always use a current leakage breaker that is compatible with higher harmonics as this unit is equipped with an inverter.

The use of an inadequate breaker can cause the incorrect operation of the inverter.

\*1 In case of connecting 3 units of MSZ-GE60VA. The Electrical data is only for outdoor unit.

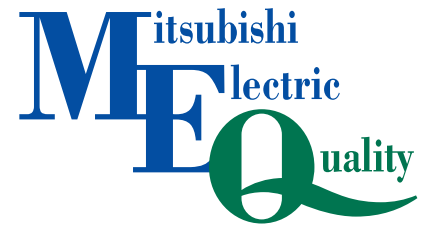
\*2 Including branch box and indoor units (3 units of MSZ-GE60VA).

\*3 See Piping Length and Height Differential Table.

Rating Conditions Cooling — Indoor: 27°C DB, 19°C WB Outdoor: 35°C (AS / NZS 3823) Heating — Indoor: 20°C DB Outdoor: 7°C DB, 6°C WB

## YOUR GUARANTEE OF EXCELLENCE

This emblem is your assurance of the very best in technology and quality as it represents Mitsubishi Electric's continuing efforts in making our air conditioners the industry standard. Every Mitsubishi Electric air conditioner is a product of painstaking research, relentless testing, and a resolute determination to improve upon vital performance characteristics. As a result, our air conditioners have become more durable, less costly to operate, quieter, easy on installation and maintenance, and better able to distribute air evenly throughout any type of interior. This kind of commitment to quality enables our products to create remarkably pleasant environments that will ultimately make your life more comfortable.



## 5 YEAR WARRANTY

Mitsubishi Electric Air Conditioners / Heat Pumps come with a full 5 year parts, labour and compressor warranty. Warranty conditions apply. Please be aware of these conditions prior to purchasing this product.

## BUYER BEWARE

The brand Mitsubishi Electric is not to be confused with the brand Mitsubishi Heavy Industries. Both brands may share the 3 red diamonds but are manufactured in completely different factories to completely different specifications.

## THE BEST QUALITY YOU CAN RELY ON

Our quality assurance program guided by our stringent Quality Policy ensures confidence in all phases of the development process from design and manufacture, to the finished product.



All units line tested



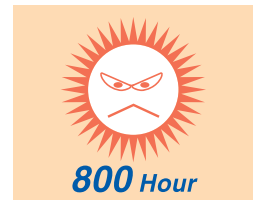
Sound test



Performance test



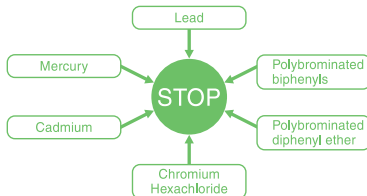
Endurance test



Heat stress test

## COMFORT MEETS ECOLOGY

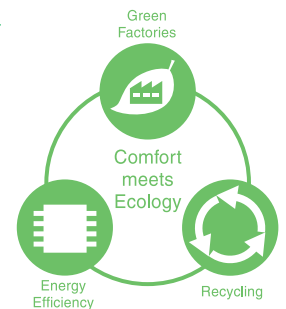
In every phase of air conditioner production, we have the earth in mind.



**RoHS Standard**

### Six chemical substances we can do without

Mercury, cadmium and lead are among six hazardous substances, found in some products, restricted or banned by the European Union as of July 1, 2006. Mitsubishi Electric has developed a system to ensure quick and early compliance with the EU directive, and we are introducing a similar system to all our Asian operations as well.



Certificate Number  
49385



Certificate Number  
EC97J1227

Mitsubishi Electric Shizuoka Works acquired ISO 9001 certification under Series 9000 of the International Standard Organisation (ISO) based on a review of quality warranties for the production of air conditioning equipment. The plant also acquired environmental management system standard ISO 14001 certification.

For further information contact:



**Black Diamond Technologies Ltd**



### AUCKLAND

Unit 1, 4 Walls Road, Penrose  
PO Box 12726, Penrose, Auckland 1642  
Phone (09) 526 9347, Fax (09) 526 9369

### WELLINGTON (HEAD OFFICE)

1 Parliament Street, Lower Hutt  
PO Box 30772, Lower Hutt 5040  
Phone (04) 560 9147, Fax (04) 560 9133

### CHRISTCHURCH

44 Halwyn Drive, Hornby  
PO Box 16904, Hornby, Christchurch 8441  
Phone (03) 341 2837, Fax (03) 341 2838

[www.mitsubishi-electric.co.nz](http://www.mitsubishi-electric.co.nz)